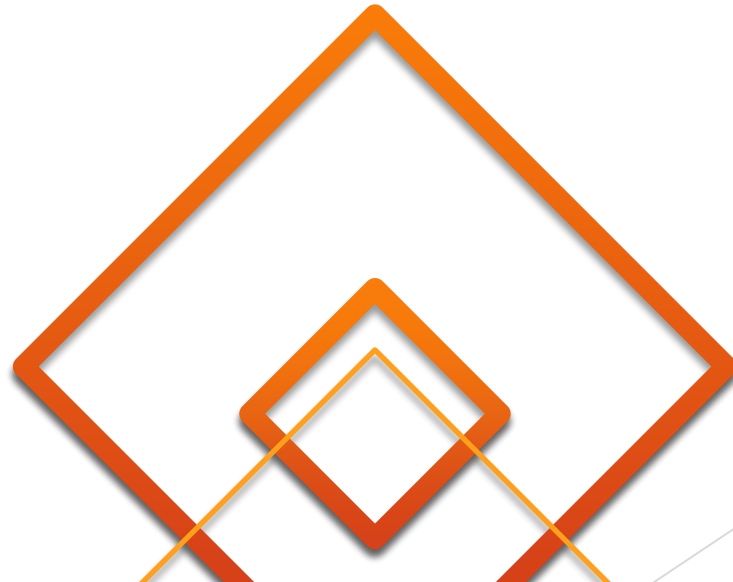


The logo features a stylized square icon on the left, composed of orange and red gradients with a white cutout. To its right, the word "LAMBOO" is written in a bold, black, sans-serif font. A registered trademark symbol (®) is positioned at the top right of the word. The entire logo has a subtle reflection effect below it.

**LAMBOO®**



**INNOVATIVE THINKING. SUSTAINABLE SOLUTIONS.**



---

8 6 6 . 9 6 6 . 2 9 9 9

---

[www.lamboos.us](http://www.lamboos.us)

# LAMBOO®

*Presents:*

## Engineered Bamboo Products for the US Design and Building Market



# WHO IS LAMBOO®?

Lamboo is a US-Based manufacturer and supplier of Engineered Laminated Bamboo (Lamboo) into the architectural and design markets.

Lamboo's focus is the development of sustainable building solutions utilizing one of the most rapidly renewable resources on the planet, bamboo.

With 12+ years of direct-market sales and projects, Lamboo's sole focus is its continued goal of promotion, supply, and fostering the use of engineered bamboo throughout the US and global markets.



# WHO IS Jeran Hammann

## Executive Vice President

- Bachelors Degree in Industrial Engineering
- 25+ years of industrial manufacturing experience across a variety of disciplines
- 12+ years of working with engineered bamboo
- Piloted the growth of Lamboo and it's products
- Responsible for creating and implementing "First to Market" products such as:
  - Florida Product Approved Laminated Bamboo Rainscreen System
  - Solid Mullion Curtain Wall and Window Wall System
- Continuing to develop more architectural-grade products for the architectural and design markets





# Challenges for Engineered Bamboo in the US Market

# LAMBOO®

## Awareness:

- Most design professionals only know of bamboo utilized in flooring or kitchen utensils.
- Not many suppliers in the US market that provide products beyond flooring
- Different areas of the US react differently to using engineered bamboo
- People have used engineered bamboo incorrectly and created a “negative” result.



# LAMBOO®

## “Building a Market”

- Implementing a new building material with the required testing data to be accepted by international and local building codes
- Continued product testing and development
- Educating Design Professionals on the proper use of engineered bamboo



# LAMBOO®

## Proper Use of Engineered Bamboo

- Understanding the parameters of engineered bamboo and how to integrate the materials into their designs and projects.
- Difference between interior, exterior, and structural grade materials
- Protecting and Treating the materials correctly per the application







# Lamboo's Success in Presenting Engineered Bamboo in the US Market



## Implementation of Engineered Bamboo

- 2010; approaching the market from a different direction
- Exterior and Structural products
- Focused on the final application
- Looking beyond the testing of the materials





## Promote Sustainability through Continued Education Programs

- CEU Courses
- In-Person/Virtual Product Demonstrations
- Lunch and Learns
- Educating the Design Professionals and End-Users





## Building Positive Relationships with our Customers and Suppliers

- Have strong relationships with the suppliers
- Providing the Do's and Don'ts
- Working with our Customers throughout the design and project process
- Continuing to develop products that reduce overall costs of the building process
- Just be Honest

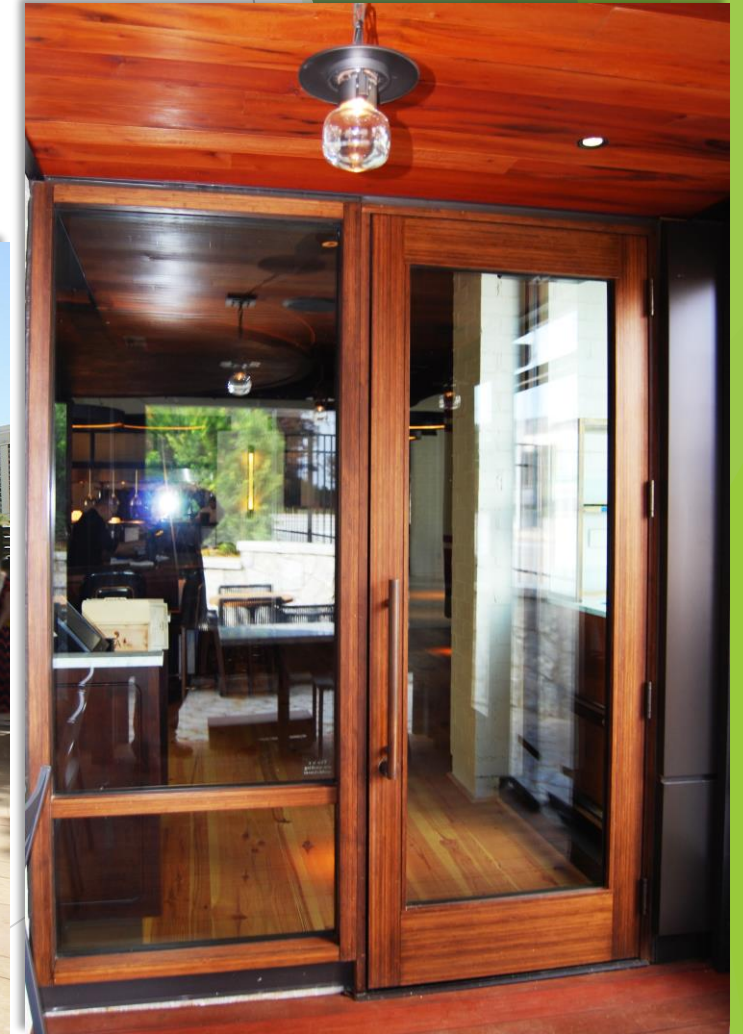
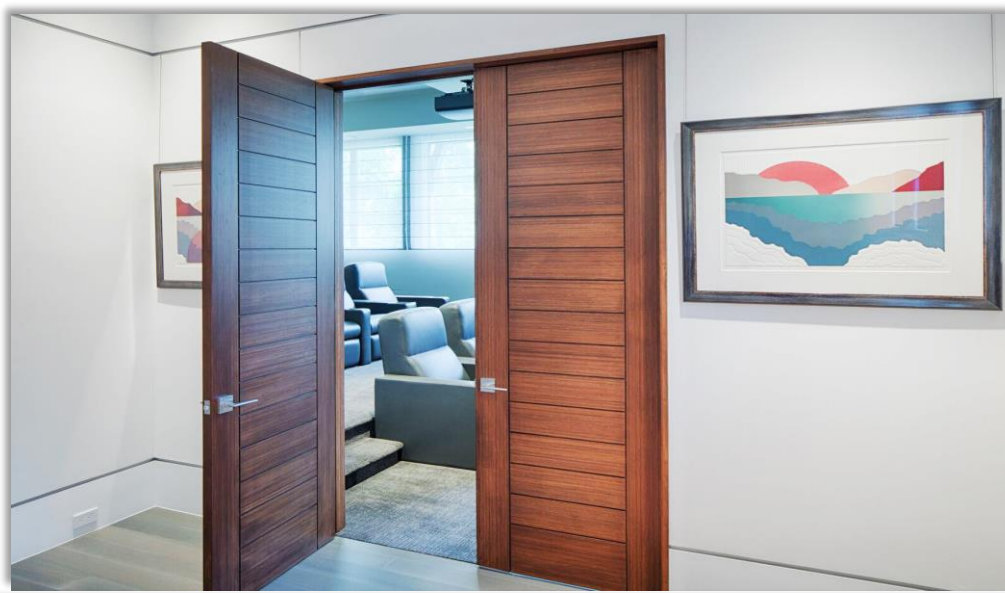


## Lamboo Project Examples

# LAMBOO<sup>®</sup>

## EXTERIORS

WINDOW & DOOR PROJECTS



# LAMBOO®

## EXTERIORS

### WINDOW & DOOR PROJECTS



# LAMBOO®

## INTERIORS

PANELS, LUMBER & VENEER PROJECTS





# LAMBOO®

## INTERIORS

PANELS, LUMBER & VENEER PROJECTS



# LAMBOO® INTERIORS

PANELS, LUMBER & VENEER PROJECTS



# LAMBOO®

## INTERIORS

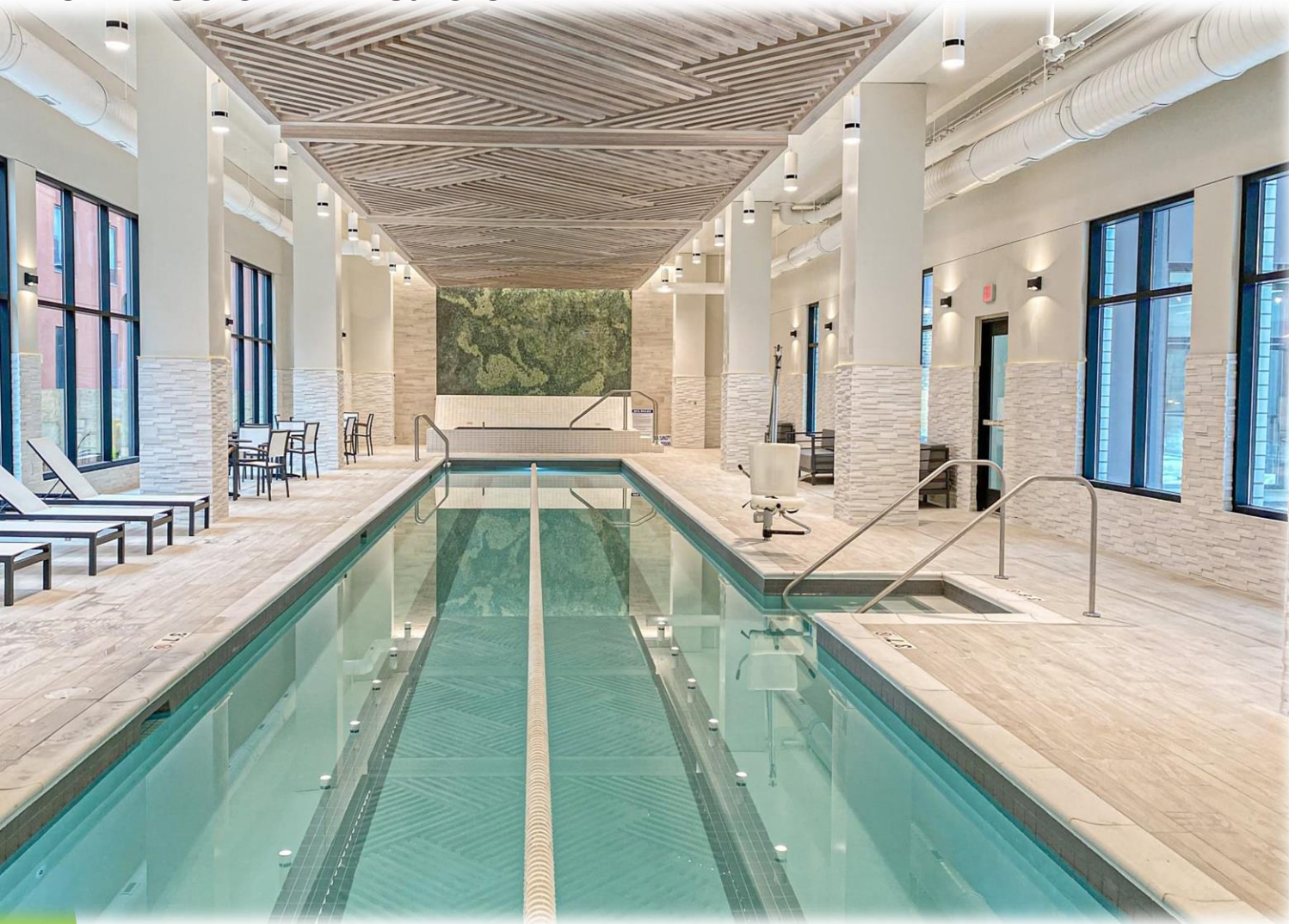
ACOUSTIC PANELS & CLADDING PROJECTS



# LAMBOO®

## INTERIORS

CEILING SYSTEM PROJECTS



# LAMBOO®

## INTERIORS

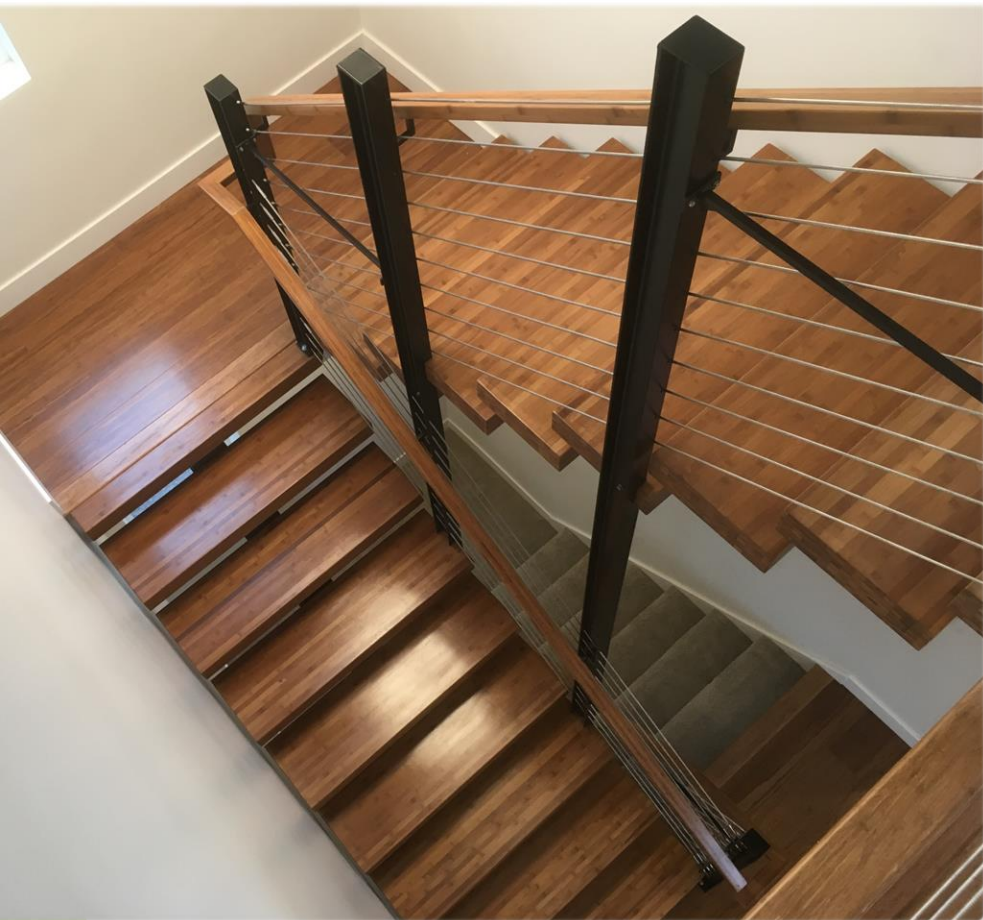
CEILING SYSTEM PROJECTS



# LAMBOO®

## INTERIORS

STAIR TREADS, HANDRAIL, & MOLDING PROJECTS

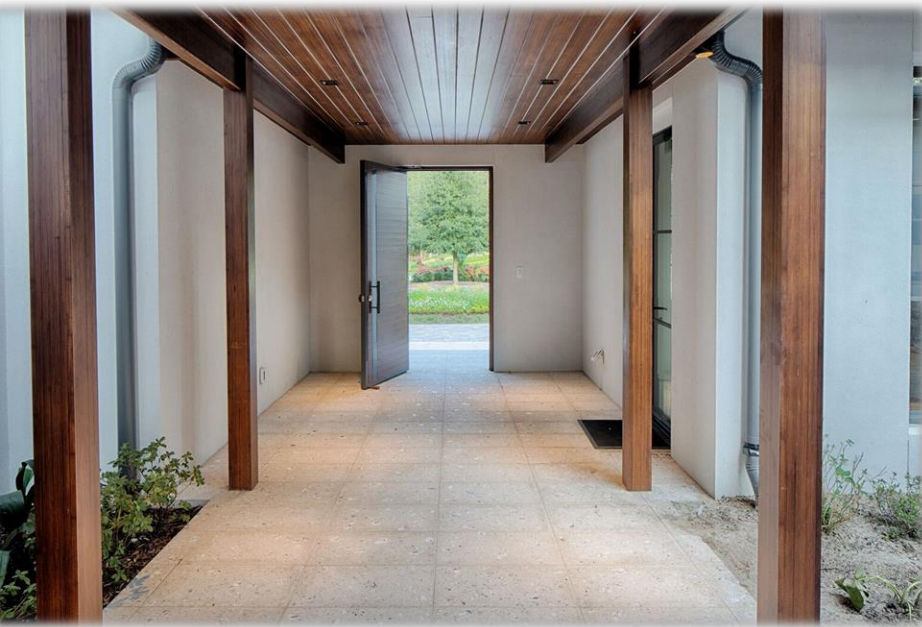


# LAMBOO®

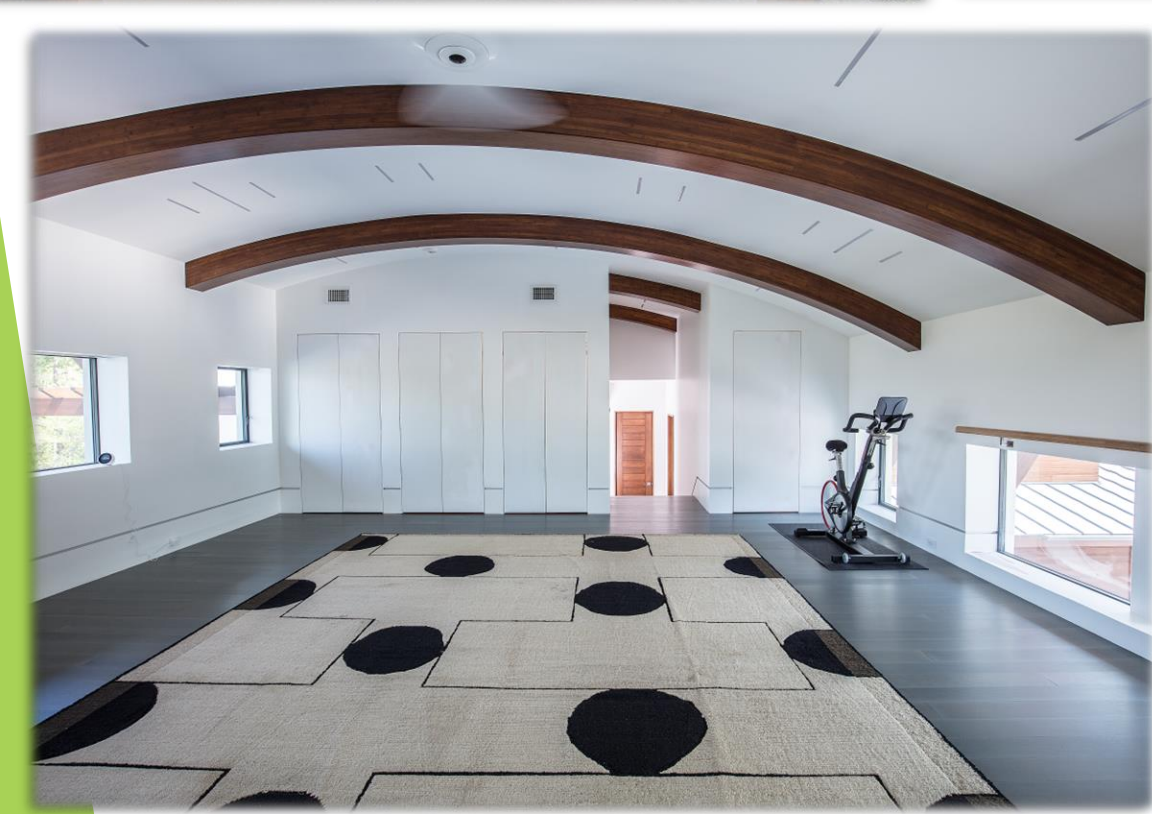
## INTERIORS

STAIR TREADS, HANDRIAL, & MOLDING PROJECTS





LAMBOO®  
STRUCTURAL  
GLU-LAM & BEAM PROJECTS





# LAMBOO®

## STRUCTURAL

### GLU-LAM & BEAM PROJECTS



# LAMBOO®

## STRUCTURAL

CURTAINWALL & STOREFRONT SYSTEM PROJECTS





LAMBOO®

STRUCTURAL

CURTAINWALL & STOREFRONT SYSTEM PROJECTS



# Make a Statement!

*Unique fabrications utilizing Lamboo® products.*



# Think outside the box!

*Unique fabrications utilizing Lamboo® products.*





INNOVATIVE THINKING. SUSTAINABLE SOLUTIONS.

**CONTACT INFORMATION:**

*EMAIL: [JERAN@LAMBOO.US](mailto:JERAN@LAMBOO.US)*

*PHONE: 866-966-2999*

*WEBSITE: [WWW.LAMBOO.US](http://WWW.LAMBOO.US)*



---

INNOVATIVE THINKING. SUSTAINABLE SOLUTIONS.

*THANK YOU!*

