

J Ö R G  
S T A M M



BAMBOO  
CONSTRUCTION

# Bamboo

Lightweight  
structures  
in Urban Area



J Ö R G  
S T A M M

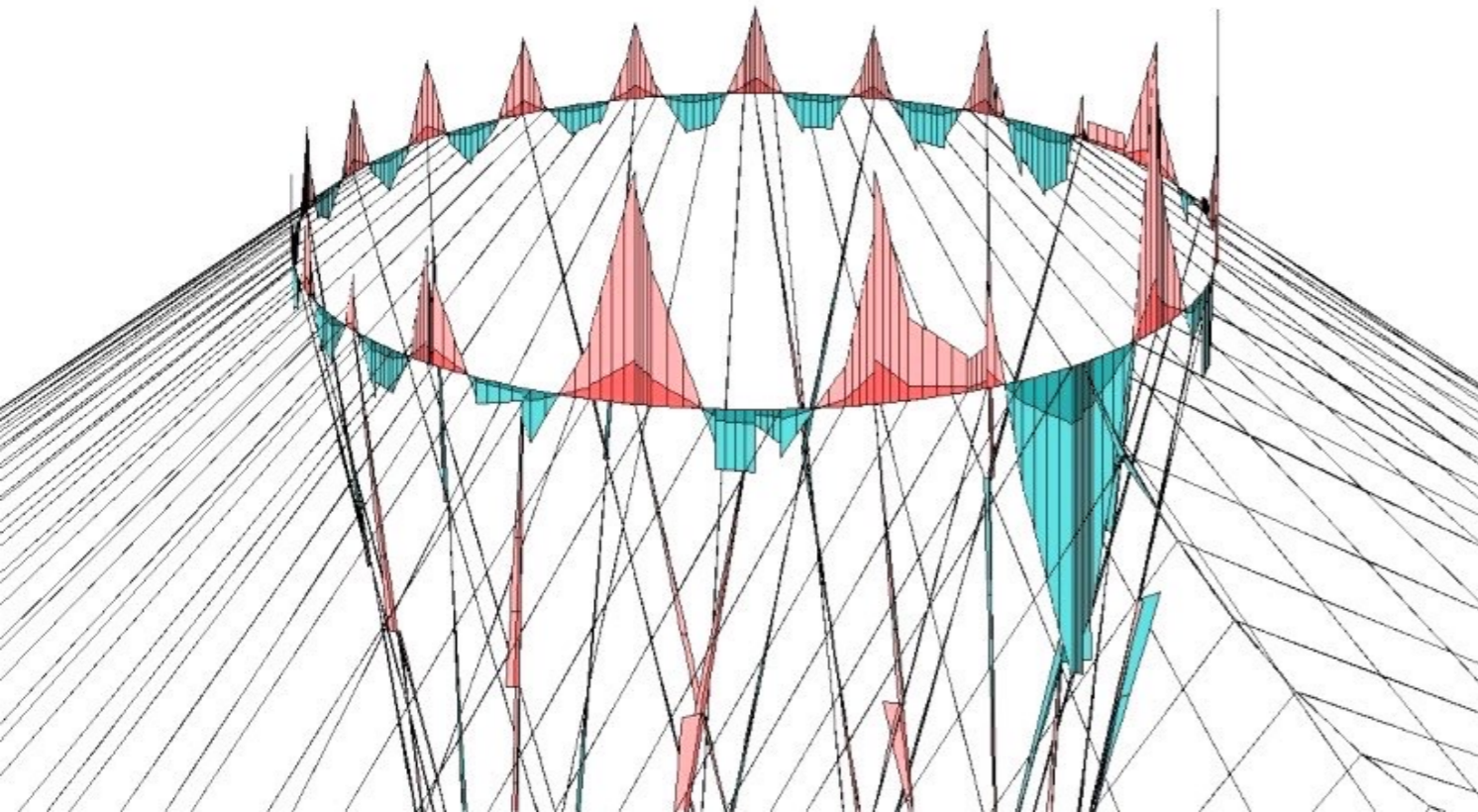
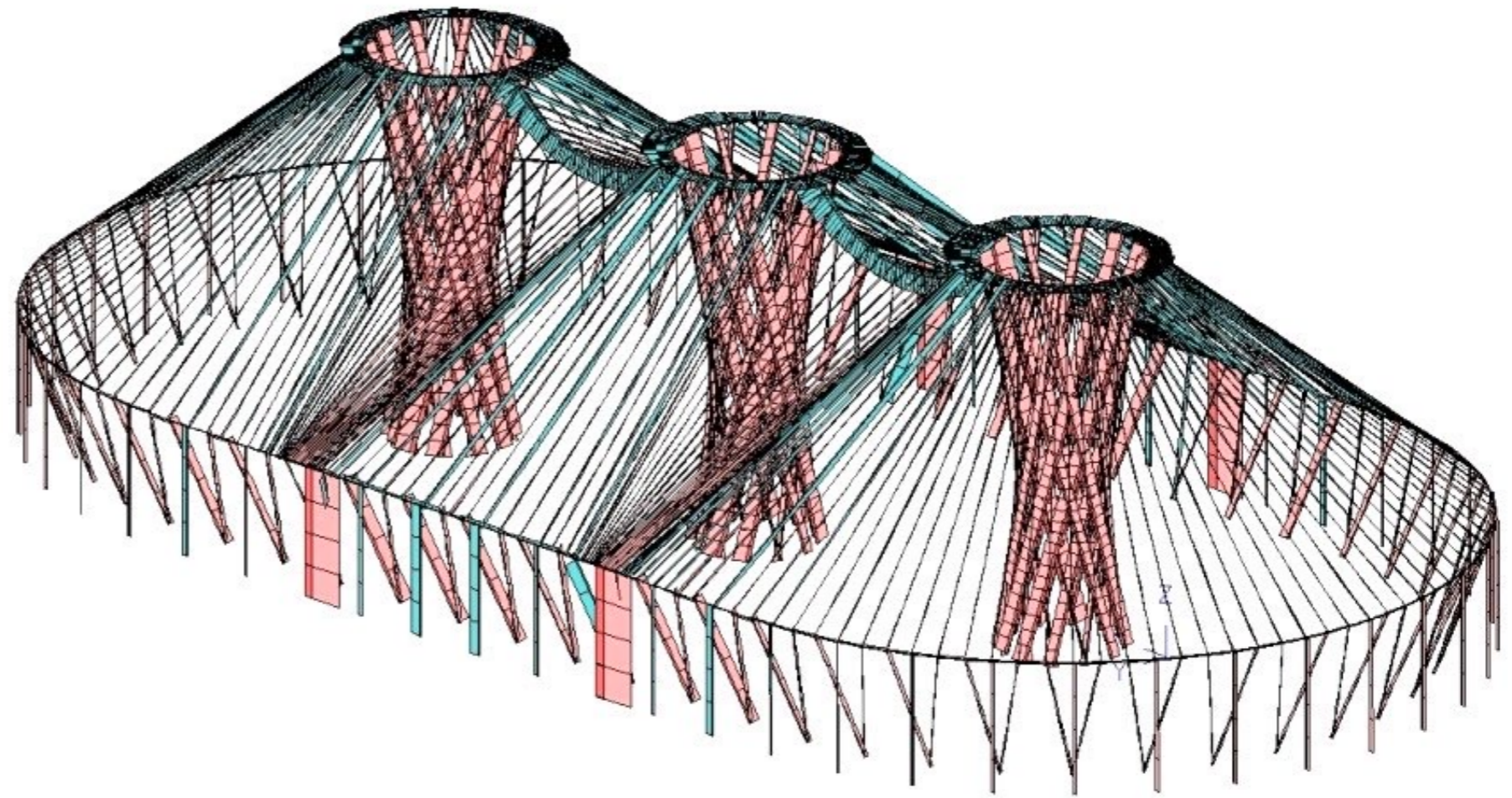
# Nature as inspiration



“ Three Mountains ”

# Mortar injection 10-folds joint capacity





**Structural  
Analysis** by Dr.  
Althoff, Erfurt  
University

JÖRG  
STAMM

**Sky Light  
Effects  
enhanced  
by natural  
beauty**

**Hyperbolic.**



JÖRG  
STAMM

# First Bamboo structure in USA

Mc Kee Botanical Gardens,  
Construction permits by  
City Hall Vero Beach.

survived Huracan Rita in 2004

Florida.



JÖRG  
STAMM

Ecuador traditional House  
**Reconstruction,**  
after earthquake 2016







**Barn style,  
spaced columns  
and beams.**





**House Bridges  
give  
Maximum  
benefit on  
minimal  
maintainence**



## House bridge

30 m, 18. Century



## Bamboo bridge,

40m, 21 Century


Eco-engineering  
con giant Grass

13



**EcoLodge** in  
Sumatra,  
Bamboo in its  
native  
environment.





Architecture is  
resembling a natural  
Growth pattern.

JÖRG  
STAMM

JÖRG  
STAMM

PinBoo flooring made with bamboo splits (glebe)



JÖRG  
STAMM







20 meter, Arch + Cable Stade  
Bridge, Bali, Indonesia 2008

Sibang Bridge at Greenschool

JÖRG  
STAMM



JÖRG  
STAMM

JÖRG  
STAMM



JÖRG  
STAMM

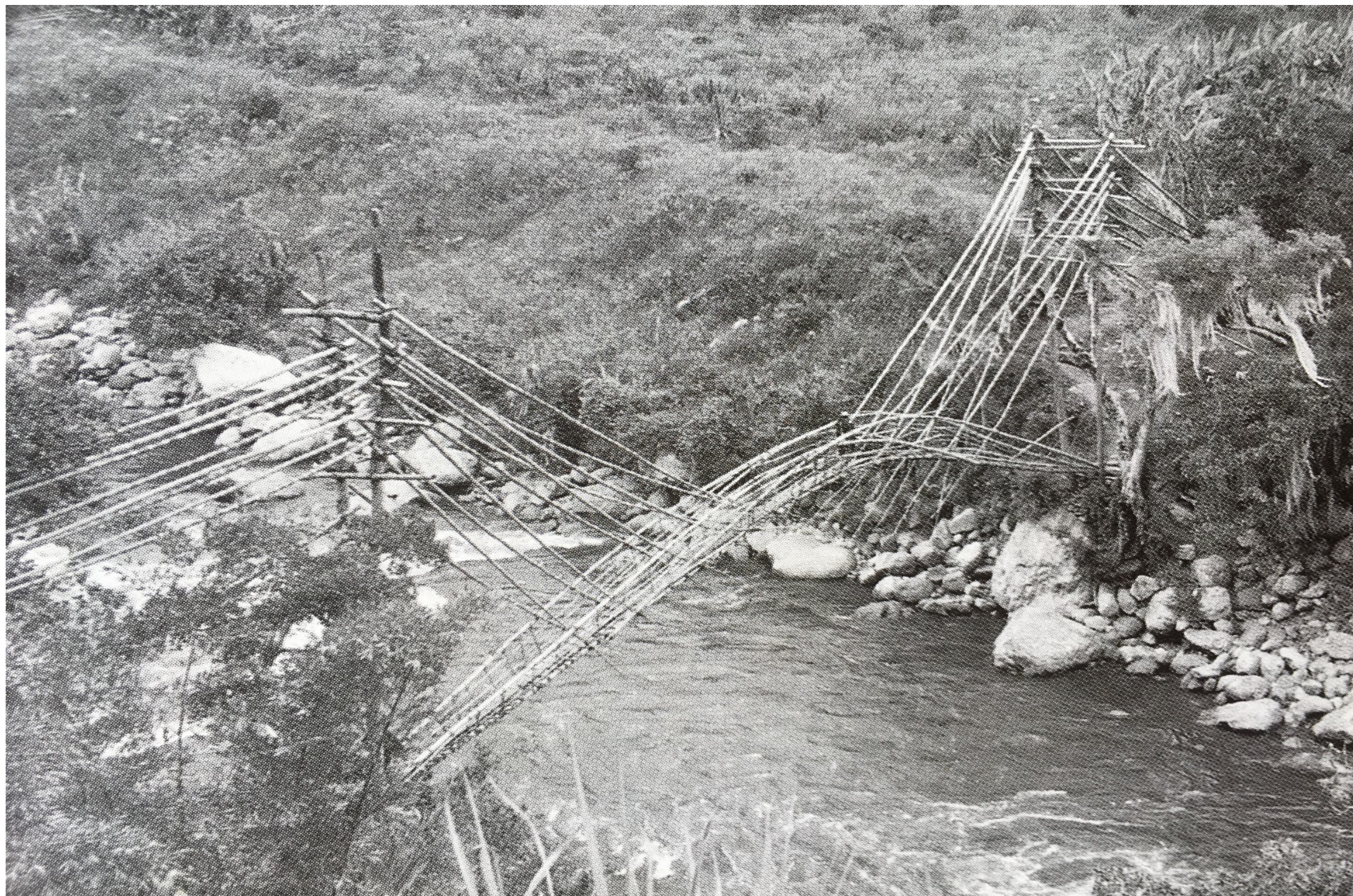


JÖRG  
STAMM



JÖRG  
STAMM





# Arch and Tensile poles as Bridge concept

Concept

JÖRG  
STAMM

**Bamboo  
Sculpture in a  
modern city  
Cucuta,  
Colombia**







# Easy lifting procedures due to **lightweight**



# “Grouting”, 10x folds the joint capacity





PinBoo, glue free Flooring

Official Load test with a total of 450kg / m<sup>2</sup>



29



Natural Curves bamboo “6  
Packs”

# Modern Design & High Tech Materials



Bridge Trusses are pre-assembled and pushed over the river





Lifting  
procedure  
with a crane, or  
“by hand”,  
traditional style.





Scissor Truss, 30m

JÖRG  
STAMM

JÖRG  
STAMM

Grouting





# “Protection by Design”

with bamboo shingles





**Orang Utan Haven,  
Scissor Bridge Truss, 30  
m, Sumatra, Indonesia**



Concept:  
**Triangle**

Pinboo planks for Flooring 4 cm thick.  
Skylight and the free swinging wings



40

**conus  
joints  
for  
space  
frames**

**Mero** system, since 1936



**Space  
frames,  
modular  
prefabrication**



**J Ö R G  
S T A M M**

**Orquids**  
Botanical Gardens,  
Mexico

JÖRG  
STAMM



# Botanical Gardens

Chapultepec Mexico



HADUWA Art Performance space, Apam

**Grid shell,  
(20 x 30m)  
Ghana**

This giant grass is sustainable, appealing, embodies sun energy and it is as versatile as any wood.



**Shells with  
curved  
bamboo,  
*Bambusa  
vulgaris*.**



JÖRG  
STAMM

Space for Art



# mobile **Yurt**, for Parks and Events



JÖRG  
STAMM

Playa Viva,  
Guerrero ,  
México





JÖRG  
STAMM







JÖRG  
STAMM



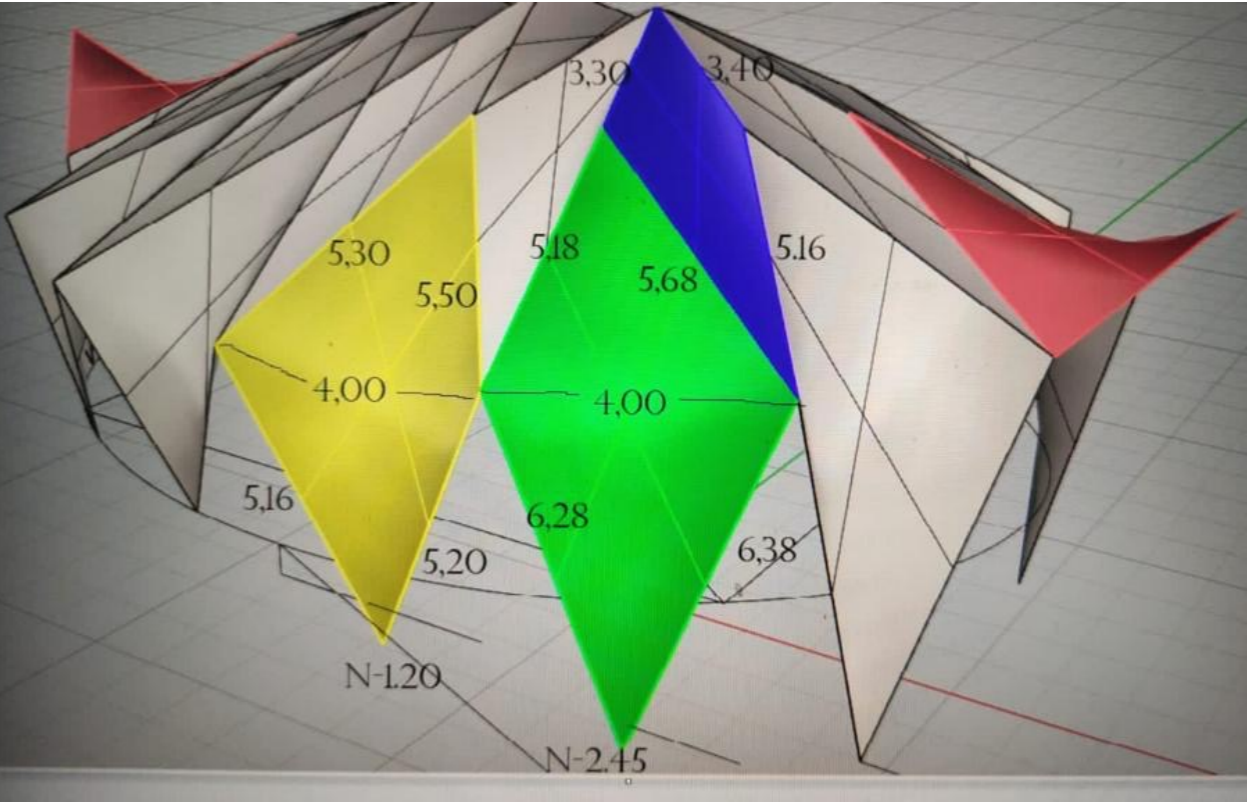
JÖRG  
STAMM



JÖRG  
STAMM

Terra  
Mulungu,  
retreat  
center,  
Guararema,  
Brazil











JÖRG  
STAMM



JÖRG  
STAMM



JÖRG  
STAMM



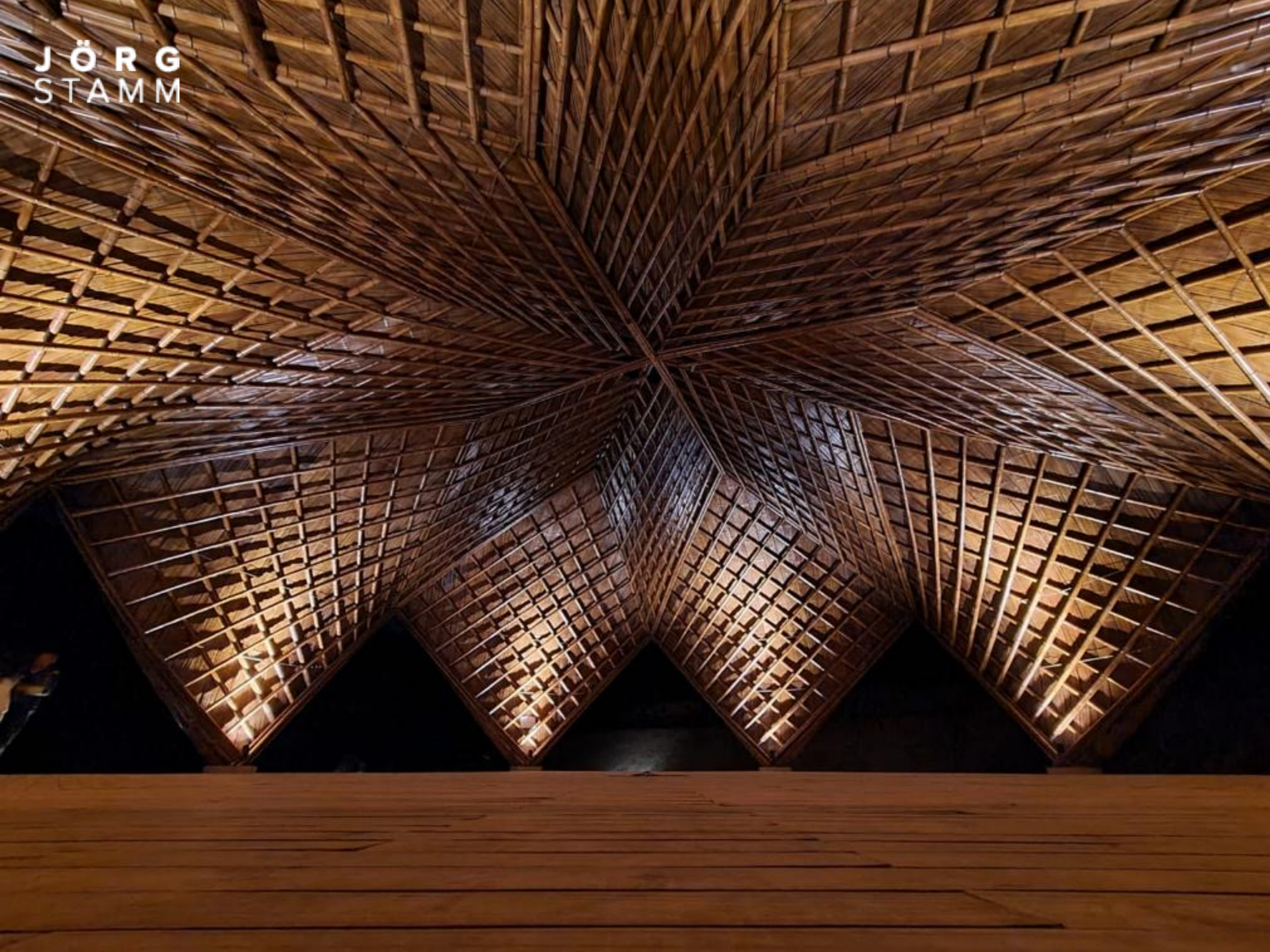
JÖRG  
STAMM



JÖRG  
STAMM



JÖRG  
STAMM



Thank You Cảm ơn bạn



[www.jorgstamm.com](http://www.jorgstamm.com)